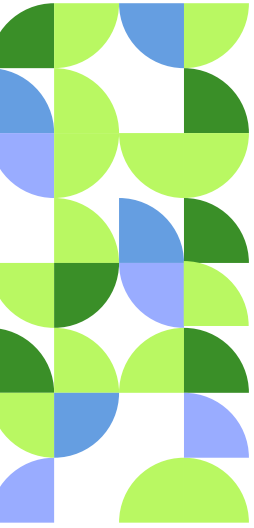


COED-Y-LAN PRIMARY SCHOOL

Dream, Believe, Succeed



Table of Contents



1. **Welcome Message**
2. **Our School Vision**
- 3-4. **A Coedylan Day**
5. **School Holiday Dates**
6. **Class Organisation**
7. **Information for Parents**
8. **The Governing Body**
- 9-10. **Learning and the Curriculum for Wales**
11. **Relationships and Sexual Education**

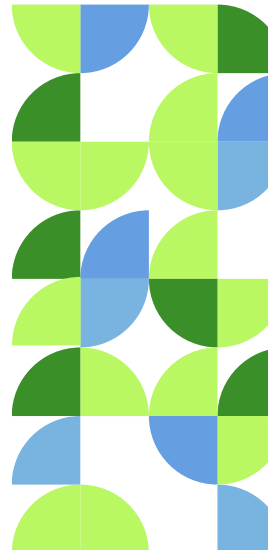
12. Religion Values and Ethics

13. Sports Activities and Additional Learning Needs

14. Disability and Accessibility

15. This is us

16. See you Soon



Dear Parents / Carers,

Welcome to Coed-y-Lan Primary School.

Choosing the right school for your child is an important decision. All parents want their children to thrive in a happy, safe and secure environment, where their individual educational needs are met.

In Coed-y-Lan Primary School we believe we can offer all these things. During their time at our school, we aim to nurture every child to develop their self-confidence, their love of learning and their individual talents. Through a broad and balanced curriculum, we will engage your child in inspiring learning activities which ignite their curiosity and develop their positive attitude to learning.

We are equally as proud of our high standards of teaching and learning as we are of the friendly, collaborative atmosphere that is always evident when you walk into Coed-y-Lan. We encourage parents, carers, grandparents and friends to have an active involvement in the life of our community school.

If you are new to our school, welcome, we look forward to working with you. If you are already one of our valued parents, I look forward to building on our positive and successful partnership.

Your sincerely,

**Mrs Angharad Prys Evans
Headteacher**



Dream, Believe, Succeed



We worked with our staff, pupils, families and Governors to decide on this set of 12 whole school, core values, We focus on one value each half term, it becomes the subject of assemblies and circle times, and is reflected on consistently throughout the half term.

Our Vision

Coed-y-Lan Primary School is a happy, safe and inclusive community, where every child feels cared for and is nurtured to aspire and achieve.

Our aim is to provide exciting and engaging learning opportunities that inspire curiosity and a love of learning. Every child's individual needs will be met and every child's talents encouraged.

Our goal for every child that leaves Coedylan, is that they have confidence, ambition, resilience and happy memories that will last a lifetime .

A Coedylan School Day

9.00 a.m

Start of the school day
(Doors open at 8.50am)

10.20 a.m

Assembly

10.40 -10.55a.m

Morning play

11.45 a.m

Lunchtime Early Years
Progression Step 1)

12.00 p.m

Lunchtime Years 1-6 (Progression
Step 2&3)

12.45 p.m

Afternoon session begins

2.00-2.10 p.m

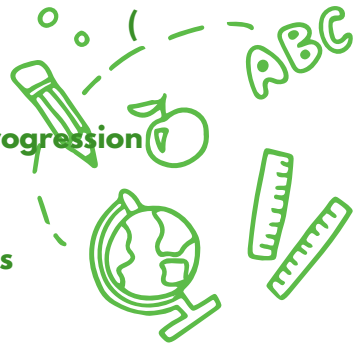
Afternoon play
(Foundation Phase only)

3.15 p.m

End of Day Early Years
(Progression Step 1)

3.20p.m

End of day Years 1-6 (Progression
Steps 2&3)



Breakfast Club

A free Breakfast Club funded by the Welsh Assembly Government is available to all pupils. Registered children may be dropped off at the school between 08:10 and 08:30 each day to participate. Doors close promptly at 8:30am, so please ensure that your child is dropped off before then. Please apply via the RCT website

<https://www.rctcbc.gov.uk/EN/Resident/SchoolsandLearning/Schoolcatering/PrimarySchoolBreakfastClub.aspx>

Lunchtime



All Primary pupils, including Nursery pupils in full time education, are now entitled to receive a free nutritious meal every day they attend school.

As an alternative to cooked meals, pupils may bring a packed lunch from home. This might be sandwiches, cheese, biscuits and fruit – please be mindful of the need to provide nutritionally balanced packed lunch. As a healthy school, we ask the children bring water to drink and that they do not bring sweets and chocolate bars in their packed lunches.

We also ask that they only bring water and fruit for their morning snack.

Attendance and Punctuality

It is the responsibility of parents/guardians to ensure their child attends school. It is the role of the school to record authorised, and unauthorised absences, and lateness.

All pupil absences - illness, medical/dental appointment etc. must be reported to the school via a telephone call or medical appointment card before 9.30 am on the first day of absence, and daily after that for the period of the absence.

Pupils arriving after 9.10am will be marked as late. Pupils arriving after registration has closed (after 9.30am) will be recorded as absent on the register and in the school records.

It is better to send a child to school for their mark at 9am or 1pm, then collect them later for medical/dental appointments, rather than keep them at home.

We would like parents to remember the impact taking time off school has on a child's education. It is the Headteacher and Governing Body's decision whether to authorise holiday. Our school policy states that we will authorise up to 10 days taken off for holidays during school term time, but only if the pupil's attendance exceeds 95%. If a pupil is being taken out of school for a holiday, a form (available from the office) must be completed and returned to the office in advance.

School Holiday Dates 2024-25

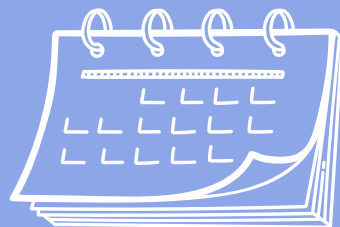
Term	Term Begin	Half Term Begin	Half Term End	Term End	No. of School Days
Autumn 2024	Monday 2nd Sept 2024	Monday 28th Oct 2024	Friday 1st Nov 2024	Friday 20th Dec 2024	75
Spring 2025	Monday 6th Jan 2025	Monday 24th Feb 2025	Friday 28th Feb 2025	Friday 11th April 2025	65
Summer 2025	Monday 28th April 2025	Monday 26th May 2025	Friday 30th May 2025	Monday 21st July 2025	55

Mon 2 Sept 2024 and Monday 21 July 2025 will be designated INSET days for all LA Maintained Schools. The remaining three INSET days to be taken will be at the discretion of each individual school following appropriate consultation with staff.

All schools will be closed on Monday 5 May 2024 for the May Day Bank Holiday.

Significant dates:

Christmas Wednesday 25 December 2024
 Good Friday Friday 18 April 2025
 Easter Monday Monday 21 April 2025
 Bank Holidays Monday 5 May 2025
 Monday 26 May 2025



Class Organisation

Class	Learning Stage	Staff
Dosbarth Celyn	Progression Step 1 Nursery and Reception	Mrs T. Stoddart-Boulton (P/T teacher 7 ALNCO) Mrs J. Davies (Acting Deputy Head teacher) Miss. A Wheeler (HLTA) Mrs A Olding (LSA) Mrs. C Evans (LSA)
Dosbarth Helyg	Progression Step 2 Years 1 & 2	Mrs. L Black (P/T teacher) Mrs. L Binks (P/T teacher) Miss.S Dwyer (LSA)
Dosbarth Castan	Progression Step 2 Years 2 & 3	Mr. O Rees (Teacher) Miss. K Leeworthy (LSA)
Dosbarth Bedw	Progression Step 3 Years 4 & 5	Mrs. L Nuttall (Teacher) Miss B Phillips (SNSA)
Dosbarth Derwen	Progression Step 3 Years 5 & 6	Mr. L Jenkins-Jones (Teacher) Mrs. H Hobby (LSA) Mrs N Amin (LSA/ Interventions)



Information for Parents



School Address	Coed-y-Lan Primary School Tyfica Road, Pontypridd CF37 2DB
Telephone:	01443 486829
Email:	admin@Coed-y-lanprimary.rctcbc.cymru
Website:	www.coedylanprimary.co.uk
Local Authority	Rhondda Cynon Taff County Borough Council Ty Trevithick Abercynon Mountain Ash CF45 4UQ
Local Authority Telephone	01443 744000
Chair of Governors	Mr. S Tucker
Headteacher	Mrs A Prys Evans
School Administrator	Mrs. M Owen
School Caretaker	Mr. H Evans

Governing Body

Coed-y-Lan Primary school has a dedicated Governing body who work proactively with the Headteacher, the Local Authority and the Central South Consortium to ensure the school provides an excellent education to all children.

If you would like to contact the Governing Body please send all correspondence to the school office who will then forward it to the Chair of Governors, Mr. S Tucker

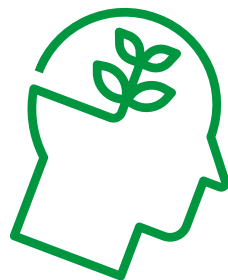
Name	Role
Mr. S Tucker	Community Governor - Chair
Mrs. A Staples	Parent Governor - Vice Chair
Mr C Black	Local Authority Governor
Mrs. L Thomas	Local Authority Governor
Ms. C Corbett	Community Governor
Mrs E Brencher	Community Governor
Mrs. C Walters	Parent Governor
Mrs. T Barnett	Parent Governor
Mrs. C Powell	Parent Governor
Mrs. M Owen	Staff Governor
Mrs T Stoddart- Boulton	Staff Governor

Learning and the Curriculum for Wales

At Coed-y-Lan Primary School, we provide a broad and balanced curriculum which is intended to engage and motivate our children.

Each half-term children engage in learning through cross-curricular topics which provide rich learning opportunities to investigate the Areas of Learning and Experience identified in Curriculum for Wales;

- Language, literacy and communication
- Mathematics and numeracy
- Expressive arts
- Science and technology
- Humanities
- Health and wellbeing.



Each term the children also explore the cross-cutting themes of;

- Relationships and sexuality education (RSE):
- Human rights
- Diversity
- Careers and work-related experiences
- Religion, values and ethics



Learning and the Curriculum for Wales



The aim of Curriculum for Wales, is to create:

- Ambitious, capable learners.
- Healthy, confident individuals.
- Ethical informed citizens.
- Enterprising and creative contributors.

Where applicable, lessons will also develop the cross-curricular skills of:

Literacy

Numeracy

Digital Competence



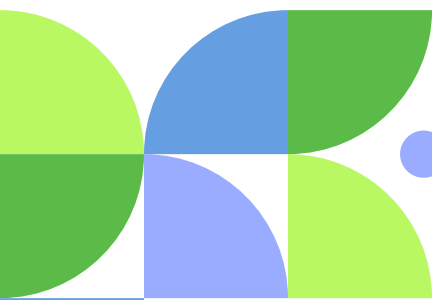
The School uses the LNF (Literacy and Numeracy Framework) and DCF (Digital Competence Framework) to ensure the delivery of the necessary skills.

It is our aim to keep abreast of all Curriculum reform and developments, implementing any change as appropriate for our children and school.



Homework

We believe that learning begins at home and that parental support is key to the success of a child's education. Children from Nursery to Year 6 will be set age appropriate homework to reinforce their learning in the classroom. As well as homework, we encourage you to read with your child every night.



Relationships and Sexual Education



In Coed-y-Lan we follow the statutory RSE Code which provides detail for schools and settings on what must be taught and when. We encourage parents to read the published RSE Code which provides clarity about what their children will learn and when. Great care has been taken to ensure that all learning within RSE will be developmentally appropriate.

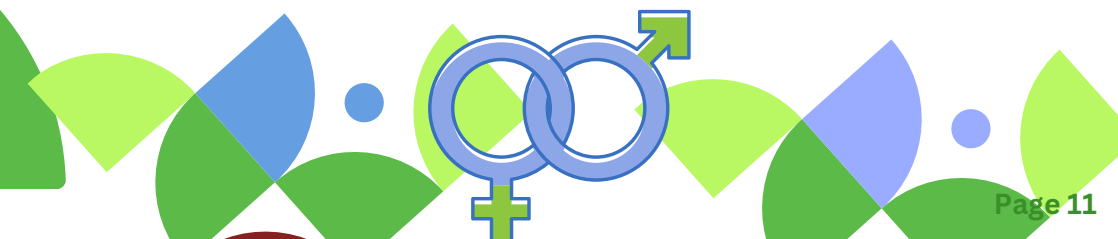
The Relationships and Sexuality (RSE) section of the Curriculum for Wales framework contains:

- RSE Code - What will be taught and at what phase;
- Statutory Guidance - This supports schools in developing their RSE curriculum.

There are legal requirements for RSE to be developmentally appropriate, including the resources schools use in implementing RSE. Topics like online safety, consent and sexual health are all included in the Code, but at developmentally appropriate phases so learners aren't exposed to things that aren't appropriate to their age and development.

At a younger age, for example, they will be taught about treating each other with kindness and empathy. As children grow older, they will gain an understanding of topics such as online safety, consent and changing bodies, all of which will be handled in a sensitive way.

Learning in RSE will also include recognising, understanding and speaking out about all forms of discrimination, violence, abuse and neglect and to seek support and advice on a range of issues from trusted sources.

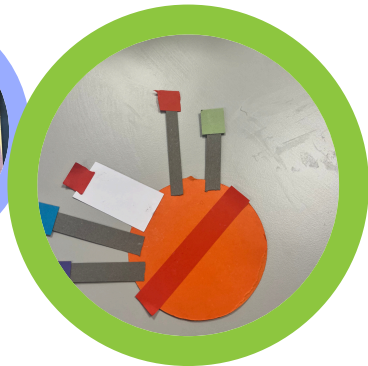


Religion Values and Ethics

Religion, Values and Ethics (RVE) is the name the Welsh Government has given to Religious Education in the Curriculum for Wales. RVE is mandatory for all learners aged 3 to 16. This now sits within the Humanities Area of Learning and Experience (AoLE), along with Geography, History, Business Studies and Social Studies.

RVE is still locally determined and therefore, as well as having regard to the Curriculum for Wales Framework Guidance on Hwb, all schools in RCT must have regard to the RCT Agreed Syllabus for RVE when designing our school curriculum.

Collective Worship is distinctive from, and additional to, curriculum time given to RVE. Collective worship sits outside the curriculum and has its own legal standing and requirements. Parents may still request that their children are withdrawn from collective worship if they wish



Cymraeg

In Coed-y-Lan we are proud of our Welsh heritage and take every opportunity to celebrate this. Welsh is used incidentally throughout the day and taught discretely. Our 'Crew Cymraeg' committee promote the use of the Welsh language and pupils are encouraged to use basic Welsh commands, and ask and answer questions using language patterns they have learnt in class.

Sports Activities



All children are required to take part in PE and lessons are conducted outside or in the hall. We aim to offer a range of activities including team sports, dance, gymnastics and athletics. Swimming lessons are also provided for pupils in Year 3-6

For safety reasons, no jewellery is to be worn in P.E. lessons (except stud earrings). Children who wear jewellery will be expected to remove it for the lesson.

We also provide a variety of after school sporting clubs.



Additional Learning Needs

Meeting pupils' additional needs is firmly at the heart of our practice. Pupils with additional needs are entitled to early identification and support. This is achieved through organisation of teaching and learning in the classroom, reinforcement with parental support or through involvement of other agencies such as language support or the local authority's access and inclusion service. We have an Additional Learning Needs Co-ordinator (ALNCo) who works alongside all agencies involved to ensure the best possible provision is provided for the children.

Registers are kept of children identified as having additional learning needs in line with the Code of Practice on the identification and assessment of additional learning needs. Pupil's progress is monitored by the ALNCo in consultation with class teachers, parents and any additional agencies involved.



Disability and Accessibility

We have a policy for accessibility which outlines the school's approach to ensuring that pupils and adults with disabilities have equal access to the schools facilities, curriculum, day to day activities and learning experiences. Our policy is available on request.

Any parent / carer with a disabled child is welcome to view the school building and its adaptations and to talk to the headteacher and staff about their child's needs. The school promises to make every possible effort to accommodate any child with disabilities.

Facilities for disabled pupils have been provided at the school. Ramps exist for wheelchair access and there are support rails in addition. There are accessible toilets in the school.

Adaptations have been made as appropriate when disabled pupils have attended the school. Children with disabilities have access to the same curriculum as the rest of the school and we will continue to make necessary adaptations to ensure that children with disabilities are treated in exactly the same way as their peers.

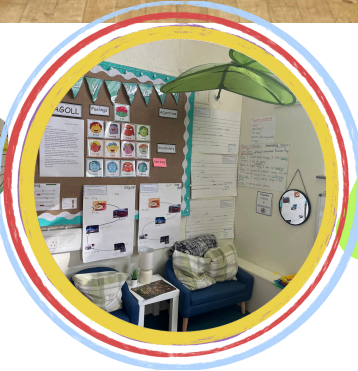
Equal Opportunities



The ethos of our school and curriculum is based on principles of fairness and justice for all. No one in the school is discriminated against on the ground of their ethnicity, religion, attainment, age, disability, gender or background. Our policy is available on request



This is us



See you soon....

If you have any further questions, please don't hesitate to contact us and we'll do our best to answer them, we look forward to seeing you soon.....

